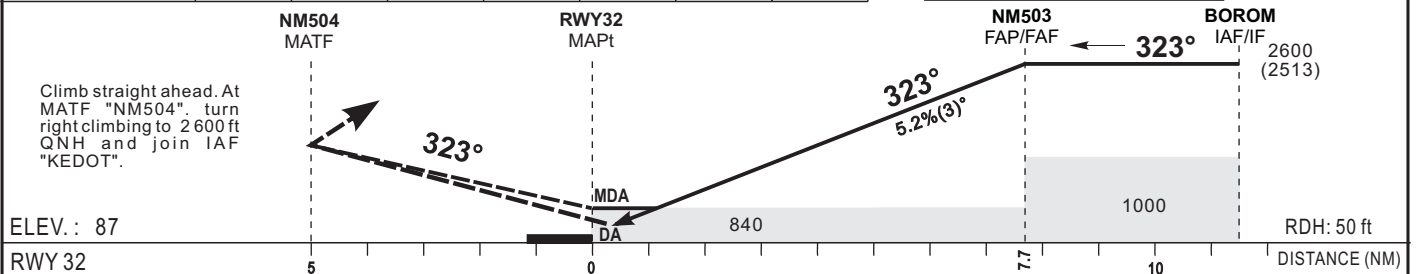


Distance to THR 32 (NM)	3	4	5	6	7	FAP/FAF
Altitude (ft)	1090	1410	1730	2050	2370	2600

TRANSITION ALTITUDE : 2600



CAT	LNAV/VNAV				LNAV				Circling (3)				RVR for take-off CAT A - B - C : 400 CAT D : 400	
	OCA (OCH)	MDA	MDH	RVR(1)	RVR(2)	OCA (OCH)	MDA	MDH	RVR(1)	RVR(2)	OCA (OCH)	MDA		MDH
A	573 (486)	580 (490)		1000	1500	837 (750)	840 (750)		1200	1500	886 (799)	890 (800)		1500
B	585 (498)	600 (500)		1200	1500	837 (750)	840 (750)		1400	1500	906 (819)	910 (820)		1600
C	605 (518)	610 (520)		1200	2000	837 (750)	840 (750)		1400	2000	1005 (918)	1010 (920)		2400
D	631 (544)	640 (550)		1600	2000	837 (750)	840 (750)		1800	2000	1005 (918)	1010 (920)		3600

Notes :- (1) With approach lights - (2) without approach lights - (3) Daytime only, OCH and MDH AAL.
 - Climbing sectors after take-off: Between radials 191° MG and 084° MG
 - Minimum temperature: 15°

PROCEDURE TO BE USED ACCORDING TO AIC NR 09/A/14 FM - 06 NOVEMBER 2014

KT	MIN . SEC		KT	MIN . SEC	
	MIN	SEC		MIN	SEC
90	5	08	140	3	18
100	4	37	150	3	05
110	4	12	160	2	53
120	3	51	170	2	43
130	3	33	180	2	34

AMDT 12/18: NORMALIZATION